



User Guide



Box Contents

- 1 x Red Star Tec PR-820 presenter
- 1 x Manual
- 1 x Protective case
- 1 x USB Wireless Receiver (found within the PR-820)

Specifications

- Weight : 40 g
- Length : 5"
- Height : 1 "
- Width : 1.5"
- Operation current : less than 30 mA
- Class 2 laser pointer

System Requirements

- Windows 10 and previous versions
- Mac OS X and previous versions
- Linux
- Android OS
- USB port (with standard USB interface)
- HID compatible device



Installation

No software is needed to use the PR-820 presentation remote. To get started simply remove the USB receiver found at the base of the remote under the battery compartment. Plug this into your USB port of your desktop or laptop.



Now insert 2 AAA batteries into your PR-820 battery compartment and turn on your PR-820.

The power indicator will turn blue, letting you know the presenter is on and working

Please note after 3 minutes of non use the PR-820 presenter will go into sleep mode and the blue light of the power indicator will go off.

To switch the PR-820 presenter back on simply press any button and the power indicator will light up again on and you will have full control of remote.

Using The Presentation Remote

The PR-820 is full of features and can be used to perform a number of functions by utilizing the navigation keys of a standard keyboard along with the mouse functions . Should you need to work with WebPages, non standard applications or Smartboards then a number of functions can become useful for you. The remote will also work with PowerPoint, Keynote, Google Slides, Excel, PDF to name a few documents.

This Slide Show Control button will allow you to advance your slides with a presentation or go back to previous slides as required. For most presenters the use of "Slide Control" button functions (up, down, left, and right) or the toggle to the right hand side of the presenter is all that you will need to advance your presentation slide show.

Using the Volume

If this is the case then it will be best to lock the mouse so that it is not a distraction to you or your audience. To lock your mouse use the mouse lock function (Key # 13)

Should you be using a smartboards, Webpages, videos with Powerpoint / Keynote or a hyperlink then you will need the use of the mouse. Once you have moved the cursor to the position that is required then you can either left click with the left click key (Key #3) or if the enter key proves to be more intuitive you can use (Key #11)

Using the mouse

The PR-820 comes with a wireless mouse built into it. The mouse can also be used as a pointer. This is especially useful if you are using a LCD or LED screens that are designed to prevent reflection from lasers.

To use the mouse will take some time to get use to so practice will be required. We do not recommend you start a presentation with the mouse active as it can be distracting for your audience. Instead use the mouse lock button to prevent the cursor from moving around as during a presentation and only use the mouse when actually needed.

The whole presenter is the mouse and therefore the actions of your hand will be transferred onto the screen. You should be able to see the cursor moving directly on your Powerpoint or Keynote presentation.

If you are working on a web page, you can use the cursor to hyperlink to another page. For videos you can use the cursor along with the enter button or the left click button to start, stop or pause your video.

For “normal” presentations that are within Powerpoint or Keynote you should not need or require the use of the mouse.

The Mouse Lock

Once you are comfortable with the control of the wireless mouse then decide if and when you want/need to use the mouse in your presentation.

If not required then it will be best to lock the mouse so that it is not a distraction to you or your audience. To deactivate the mouse/cursor simple press the mouse lock button. See above diagram for mouse lock button.

Using the Laser Pointer

To use the laser pointer simply press the laser pointer and the laser light will activate and can be used to point to specific parts of your presentation.

Other Functions

The Power switch is to the left side of the PR-820, Switch on the remote

The power indicator is lit when the remote is active and ready to be used, after 3 minutes of non use the PR-820 will automatically go into sleep mode

Left click, Right click, Enter, return - work as they would on a standard keyboard. The home key acts in the same way as a double right click.

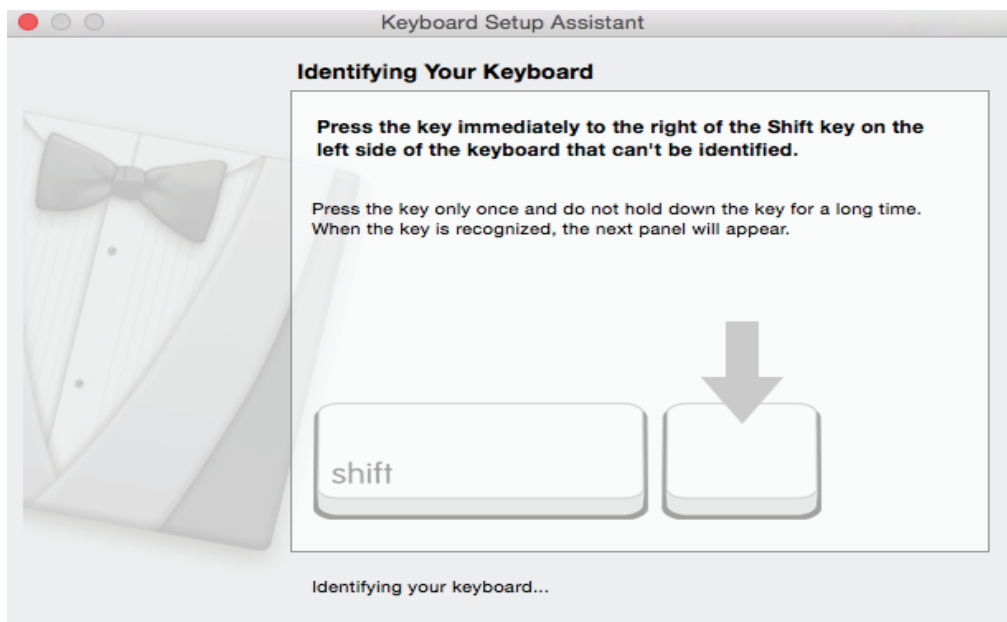
FOR MAC USERS

For some Mac users you may find that the presentation clicker does not appear to work when first plugged into your MAC. A message indicating that the device is not recognized by your MAC will appear.

This message occurs as the Keyboard setup of the MAC is not the set up by default in the same way as a PC. You will then need to use the Keyboard Setup Assistant to remap your keyboard and allow your MAC to recognize the presenter.

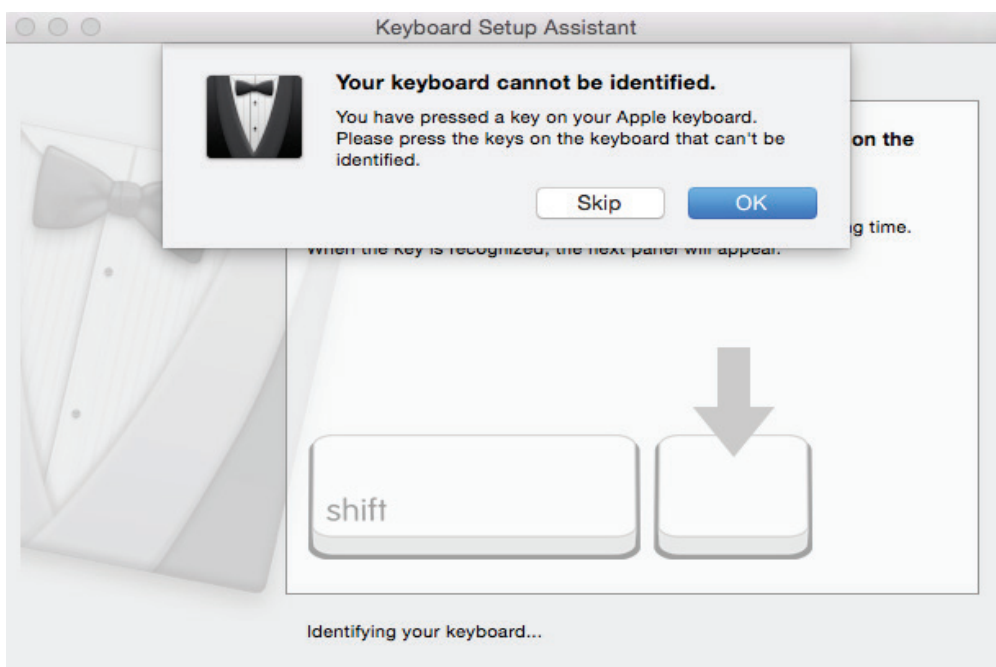
How to use the Keyboard Setup Assistant to identify your keyboard

1. Insert the USB receiver of the Presentation clicker into the USB port
2. Press the shift key & the key immediately to the right of the shift Key on the left side of your Mac keyboard simultaneously.

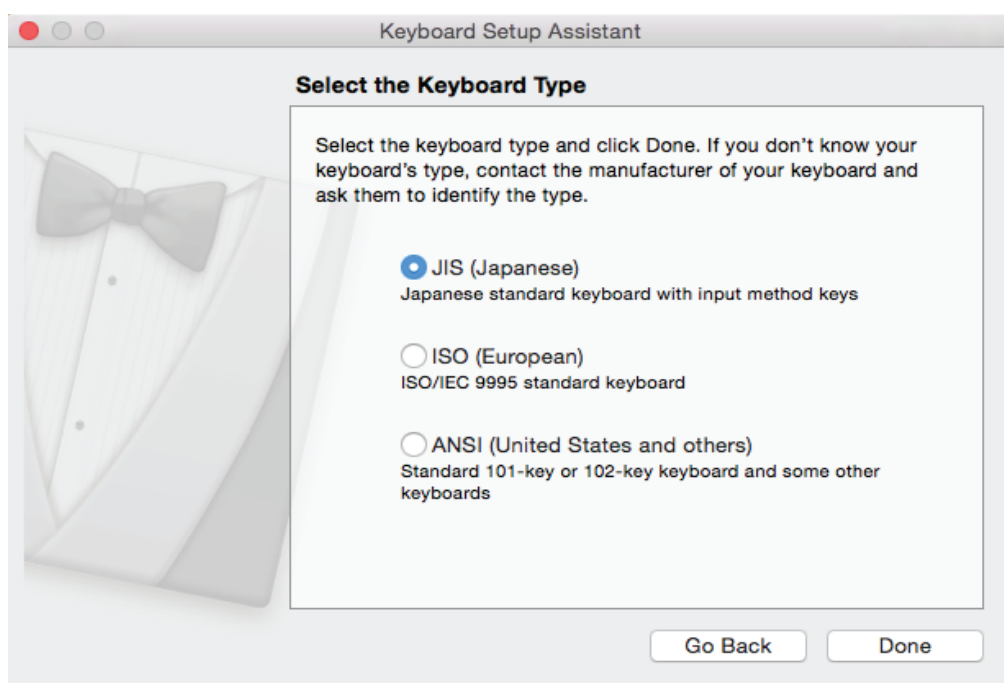


This is usually the (~) key (See the image above).

3. You will then see a message that states your keyboard cannot be identified.



4. Select the SKIP option
5. The Keyboard Setup Assistant will then prompt you to select your preferred (Keyboard Type).



6. Select the ANSI (United States and Others) option
7. Once you have selected the ANSI keyboard option click the done option
8. Once you have changed your keyboard type. You should find that your USB receiver is recognized. Confirm this by switching on the clicker and launching a PowerPoint or Keynote slide show your slides should now go forward & back as desired.
9. You are now ready to use your presentation clicker.

At Red Star Tec we welcome your ideas and feedback, please feel free to share them with us at support@redstartec.com